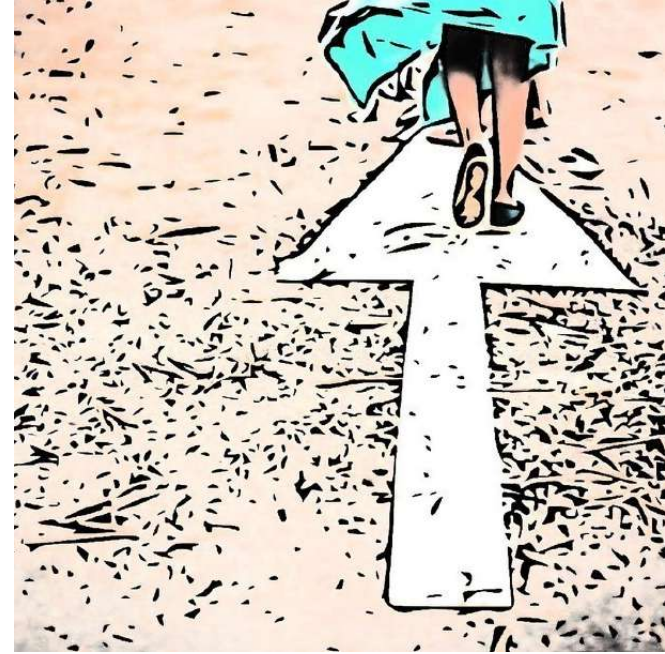


Ilse Derluyn

Centre for the Social Study of Migration and Refugees

Department of Social Work and Social Pedagogy

Ghent University - Belgium



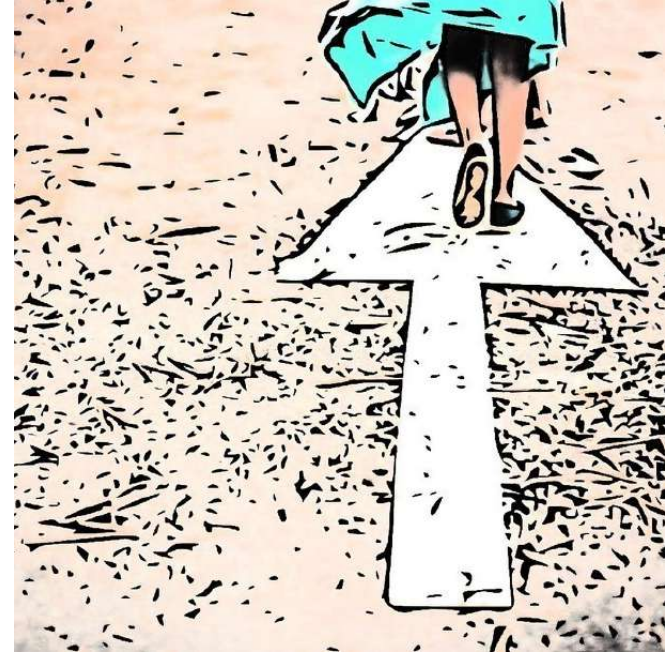
CHILDMOVE

**The impact of flight experiences
on the psychological wellbeing of unaccompanied refugee minors**



European Research Council
Established by the European Commission





Welcome!

Programme

Monday 03.02.2020 – 1:00 - 5:30

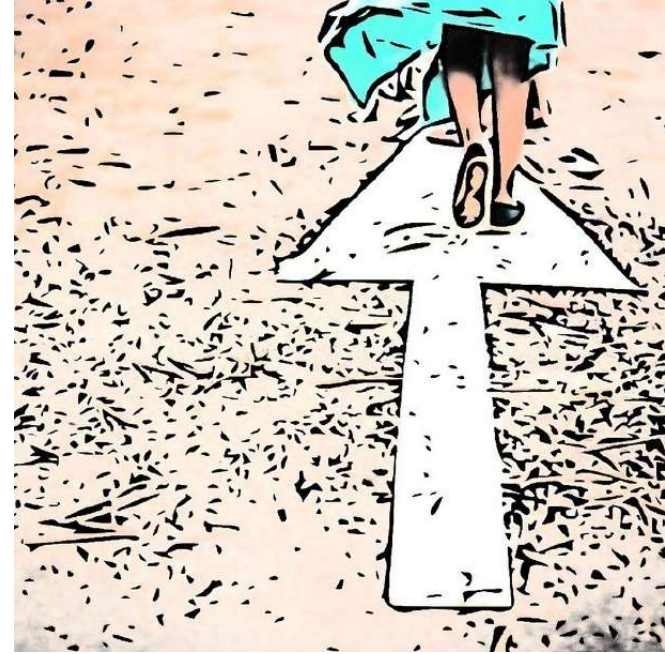
Welcome

- I. Introduction to the project
- II. Presentations of the different substudies
- III. General discussion

7pm Diner – Brasserie Ha!

Tuesday 04.02.2020 – 9:00 - 12:00

- IV. Dissemination
- V. Specific questions



I. Short introduction to the project

MAIN OBJECTIVE

To increase knowledge about the impact of experiences occurring *during the flight* on the psychological wellbeing of unaccompanied refugee minors, in relation to the impact of past traumatic experiences in the home country and to daily material and social stressors in the host country

- 1 Which flight experiences?**
- 2 Psychological impact of flight experiences & impact of racism, detention, reception conditions**
- 3 Differentiation past trauma (home) – flight experiences – current stressors (host country)? Theoretical alternative? (Herman 1992; Miller & Rasmussen 2010; V. Turner 1967; S. Turner 2015)**
- 4 Beneficial types of care & support?**

STUDY CONTEXTS

Libya

Greece

Italy

Belgium



STUDY 1

Libya

Detention centre

Participant observations
 Visual ethnography
Graffiti analysis Derluyn et al 2014

Greece

Detention centre

Centres URM

50-80 URM in each
 country
 (>14 years of age) (n=300)

Italy

Centres URM

Informal setting

In-depth interviews
Complex and multiple experiences
Past, present, future
Interpretors

Belgium

Centres URM

Police station

Belgi

STUDY 1

Libya

Detention centre

Participant observations
 Visual ethnography
Graffiti analysis Derluyn et al 2014

Greece

Detention centre

Centres URM

50-80 URM/country ($n=300$)
 In-depth interviews
Experiences past, present, future

Italy

Centres URM

Informal setting

Self-report
 questionnaires (Bean,
 Derluyn et al 2006, 2007)
*Mental health, coping,
 social support, past
 trauma, current stressors*

Belgium

Centres URM

Police station

Own language; interpreters

STUDY 1

Libya

Detention centre

Participant observations
 Visual ethnography
Graffiti analysis Derluyn et al 2014

Greece

Detention centre

Centres URM

50-80 URM/country (*n=300*)
 In-depth interviews
Experiences past, present, future

Italy

Centres URM

Informal setting

Self-report questionnaires
Bean, Derluyn et al 2006, 2007
Mental health, coping, social support, trauma, stressors

Belgium

Centres URM

Police station

Ethics vervliet, Derluyn et al 2015
Interpretors; referral network; informed consent

STUDY 2

Greece

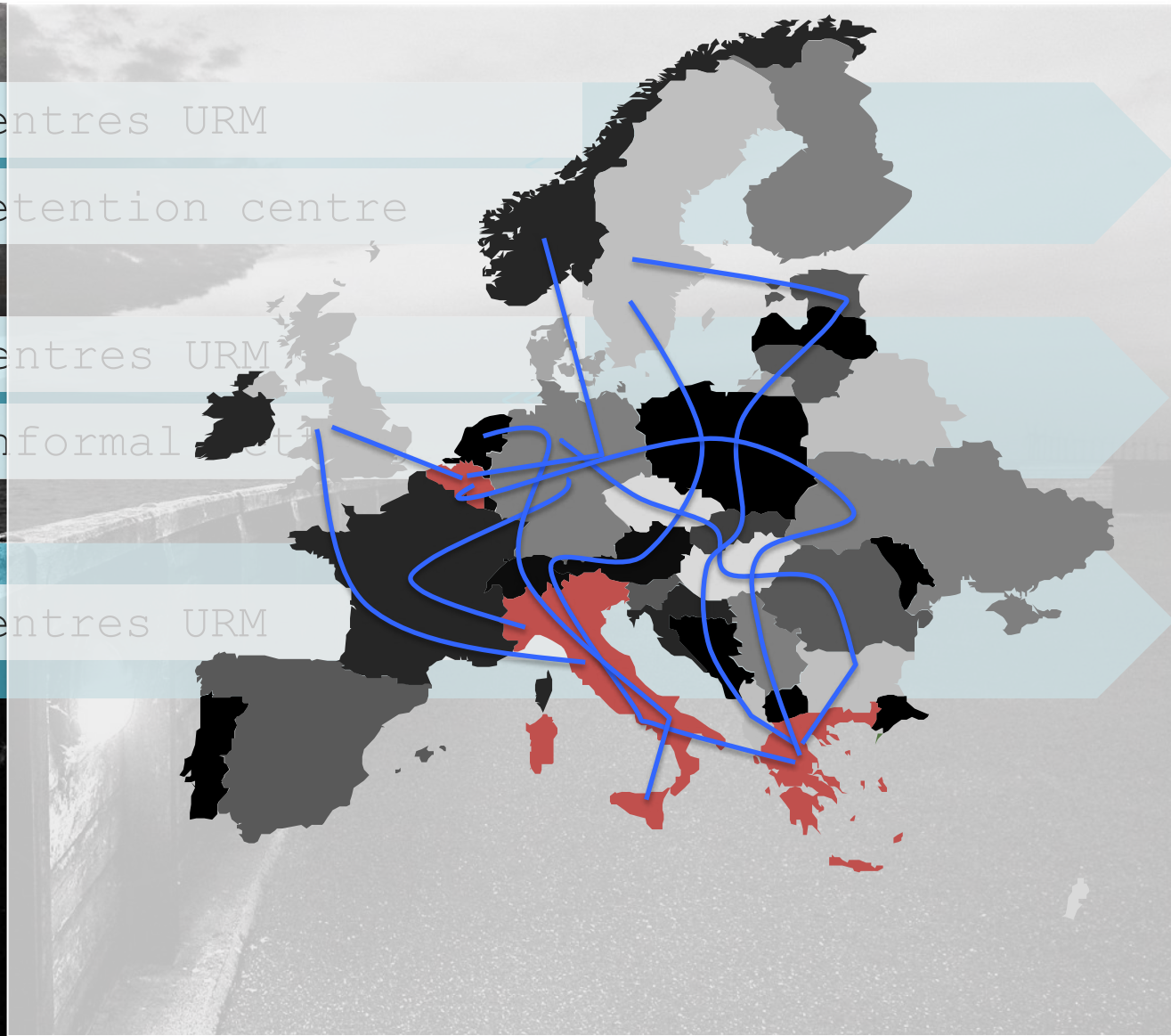
Centres URM
Detention centre

Italy

Centres URM
Informal

Belgium

Centres URM



STUDY 2

Greece

Detention centre

Centres URM

Italy

Centres URM

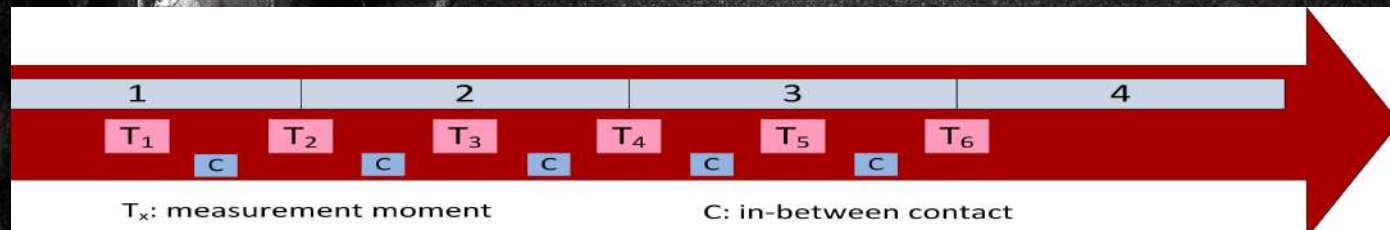
Informal setting

Belgium

Centres URM

In-depth
interviews

Questionnaires



STUDY 1

STUDY 2

STUDY 3

Publications

- ✓ Book chapter: graffiti as a method (*Uzureau et al.*)
- ✓ Care structures (*Lietaert et al., EJSW*)
- ✓ Coping mechanisms T1 Belgium (*Behrendt et al.*)

- ✓ Trajectories – maps

Planned publications

- ✓ Libya: quantitative data (trauma, daily stressors, PTSD) (lancet?); qualit data? (incl other samples?)
- ✓ Detention – Greece
- ✓ Ethical challenges
- ✓ Relationships with / expectations from family
- ✓ Care structures / support
- ✓ Transit experiences – description
- ✓ Longitudinal quantitative follow-up emot. wellbeing – in relation to trauma, daily stressors, care?
- ✓ Graffiti – content
- ✓ Individual PhDs (cf. infra)

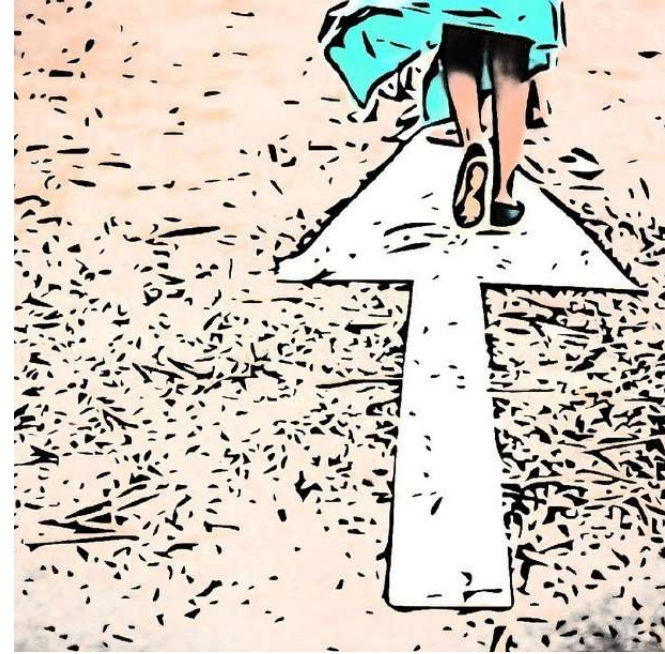
STUDY 1

STUDY 2

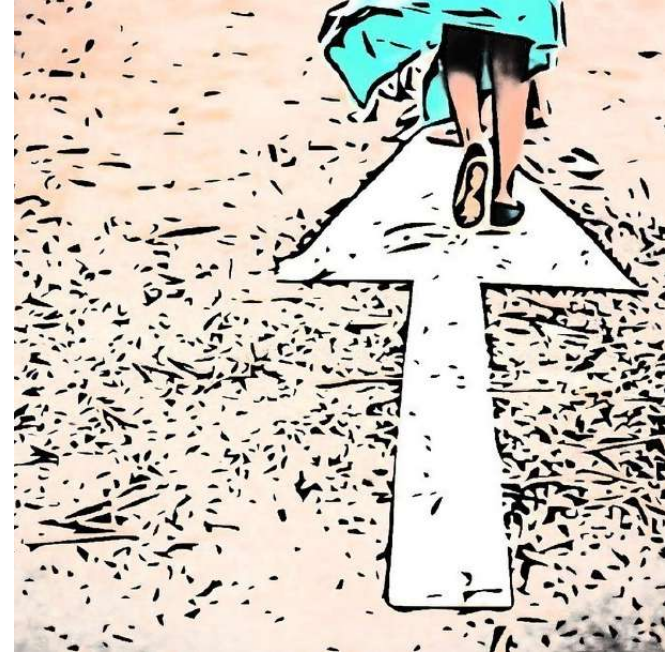
STUDY 3

Other ways of dissemination:

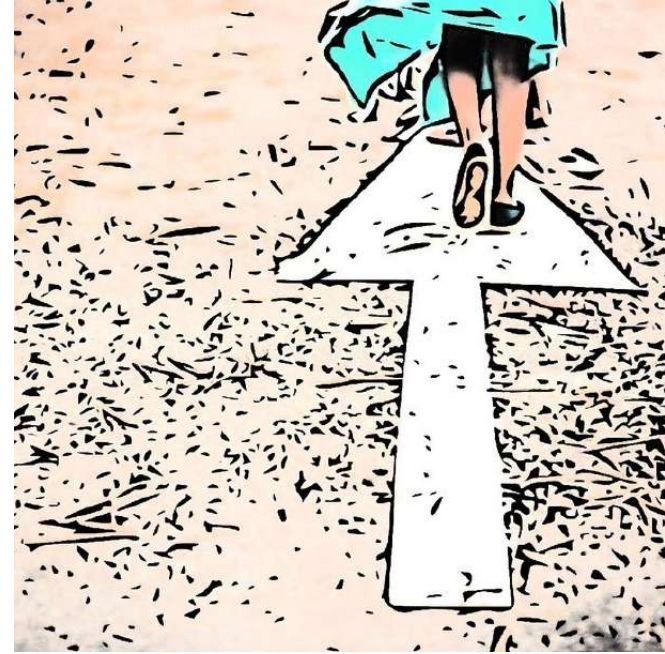
- ✓ MPI event
- ✓ Conferences
- ✓ Website
- ✓ National stakeholders committees (Italy, Belgium, Greece)
- ✓ Advice Catalonian government



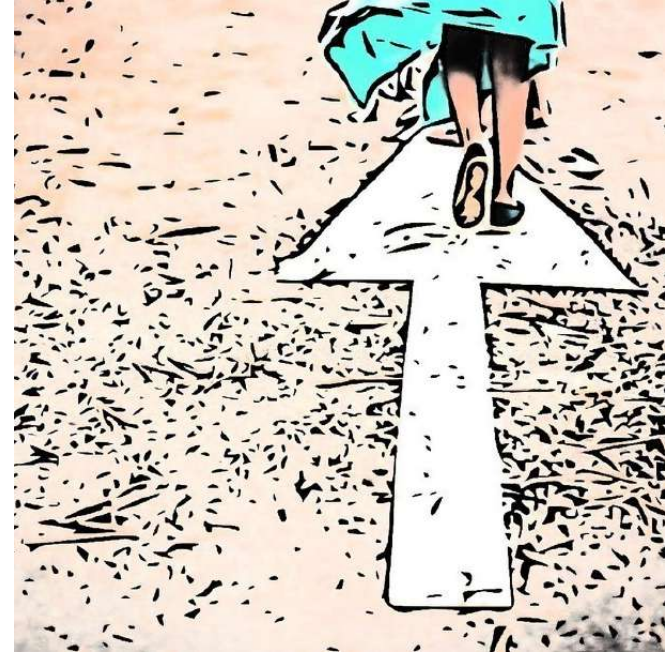
II. Presentations of the different subprojects



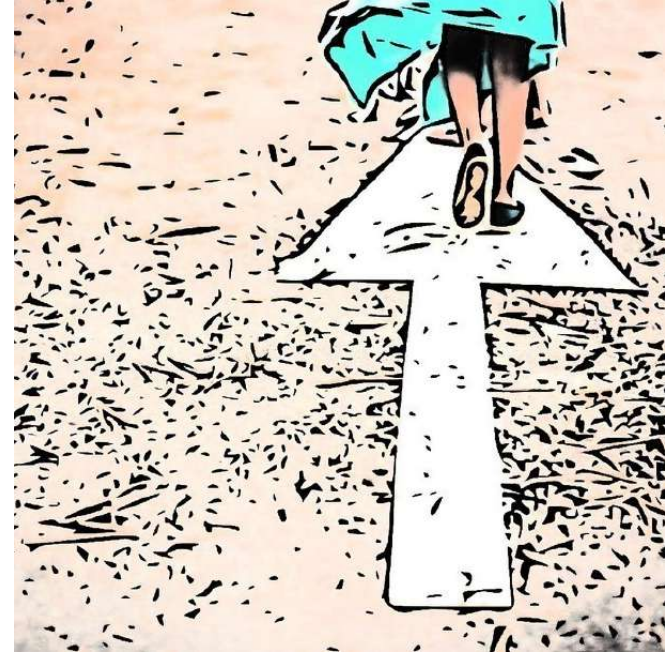
2.1 Libya



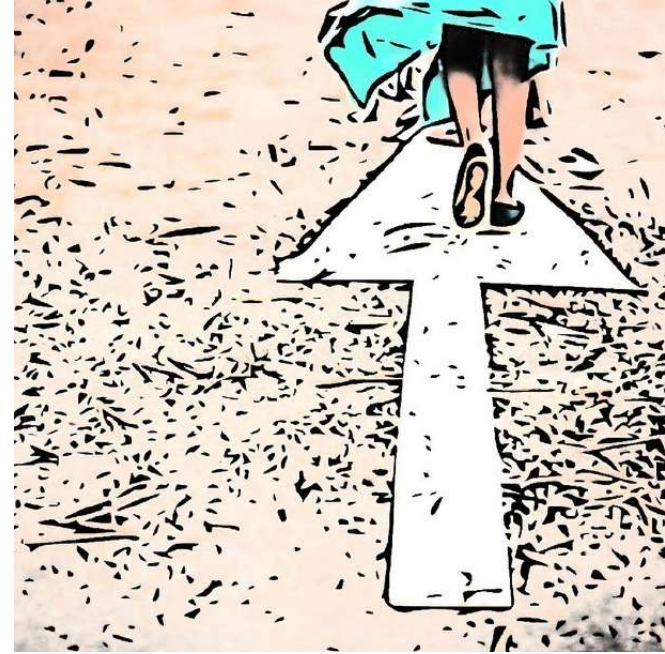
2.2 Italy (1)



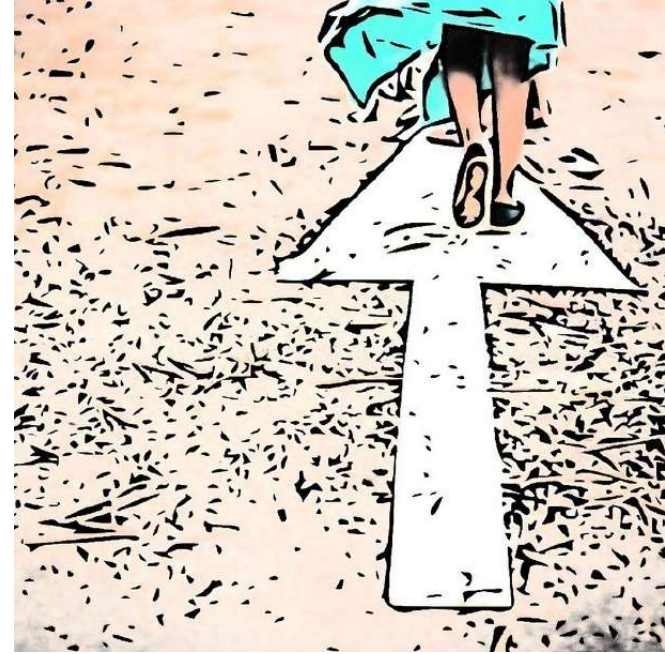
2.3 Italy (2)



2.4 Greece



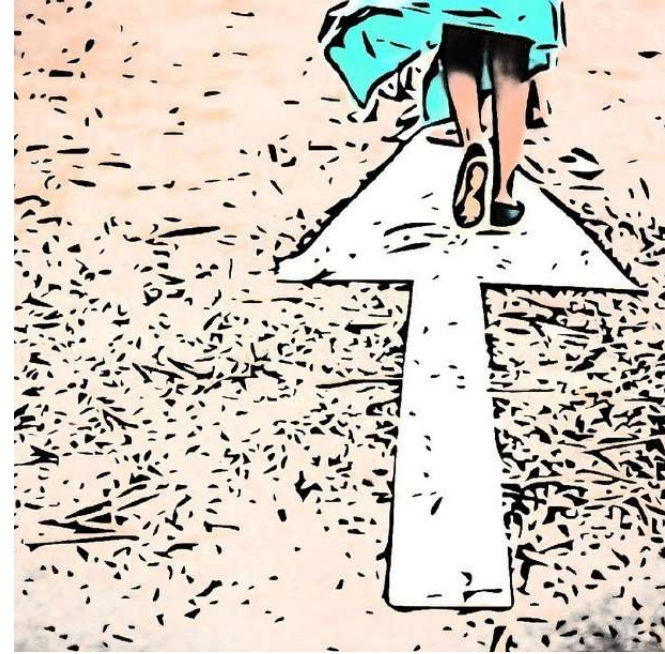
2.5 Belgium



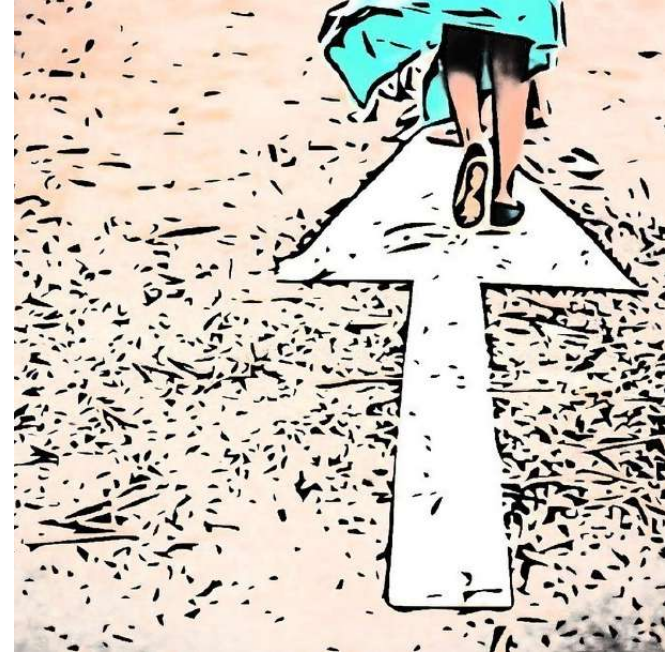
III. General discussion

III. Some questions for reflection

- Other themes and data that we should work about/with?
 - How to convey evidence of border and police violence within academic articles?
- Theoretical frameworks which we can use and/or questions that we can elaborate on theoretically
- Can we 'quantify' qualitative data? (e.g., coping strategies, presence of /contact with family members, social support)?
- How to use the 'other' data (whatsapp, phone conversations, informal conversations,...) – what with consent?
- Ethics: How to deal with wrong/different reports about age, nationality, migration road,... (e.g., when it changes at M3)?
- How to deal with differences between ethnic groups, especially important for Eritreans? (impossible to generalize and hence challenging to draw any conclusions because it always depends on the ethnic group?; incorrect reports about own nationality cf. Eritrean - Ethiopian)
- How to address changes of laws and regulations? (e.g., new migration law in Greece, changes in policy in Italy)
-



IV. Dissemination



V. Specific research questions